



# DISCLAIMER ON FORWARD LOOKING STATEMENTS

---

This presentation contains “forward-looking information” within the meaning of applicable Canadian securities legislation. Forward-looking information may include, but is not limited to, information with respect to the developments in Gatekeeper’s operations in future periods, the adequacy of Gatekeeper’s financial resources, costs and timing of development and Gatekeeper’s executive compensation approach and practice. When ever possible, words such as “plans”, “expects”, or “does not expect”, “budget”, “scheduled”, “estimates”, “forecasts”, “anticipate”, or “does not anticipate”, “believe”, “intend”, and similar expressions or statements that certain actions, events or results “may”, “could”, “would”, “might” or will be taken, occur or be achieved, have been used to identify forward-looking information.

Forward-looking information is subject to a variety of known and unknown risks, uncertainties and other factors that could cause actual events or results to differ from those expressed or implied by the forward-looking information, including, without limitation, those described under “Risk Factors” in the Prospectus and the following: reduced spending by the Corporation’s customers that result from changes in spending policies or budget priorities; the Corporation’s ability to manage risks inherent in foreign operations; the Corporation’s ability to protect its brand; the Corporation’s ability to obtain products and parts from suppliers on a timely basis and on favorable terms; the Corporation’s ability to manage its manufacturing and logistical services successfully; the reliability of product manufacturing and assembly and logistical services provided by third parties; possible changes in the demand for the Corporation’s products; the Corporation’s ability to successfully execute its business strategies; the Corporation’s ability to establish new relationships and to build on its existing relationships with integrators and dealers; and the Corporation’s ability to manage cash flow, foreign exchange risk and working capital.

This list is not exhaustive of the factors that may affect any of the Corporation’s forward-looking information. Although Gatekeeper has attempted to identify important factors that could cause actual results to differ materially from those contained in forward-looking information, there may be other factors that cause results not to be as anticipated, estimated or intended. There can be no assurance that such information will prove to be accurate, as actual results and future events could differ materially from those anticipated in such information. Forward-looking information involves statements about the future and is inherently uncertain, and Gatekeeper’s actual achievements or other future events or conditions may differ materially from those reflected in the forward-looking information due to a variety of risks, uncertainties and other factors, including, without limitation, those referred to in the Prospectus under the heading “Risk Factors” and elsewhere in the Prospectus. Gatekeeper’s forward-looking information is based on the beliefs, expectations and opinions of management on the date the statements are made, and the Corporation does not assume any obligation to update forward-looking information, whether as a result of new information, future events or otherwise, other than as required by applicable law. For the reasons set forth above, prospective investors should not place undue reliance on forward-looking information.

This presentation is not, and is not intended to be, an offer to sell or the solicitation of an offer to buy any security of Gatekeeper in any jurisdiction. This presentation is not an offering memorandum.

# VIDEO & DATA SOLUTIONS PROVIDER FOR SCHOOL BUSES & PUBLIC TRANSIT



1

## Growth inflection | Profitable

- \$32.8M TTM Revenue (at FQ1 Nov 30, 2023)
- \$5.3M TTM Net Income
- Strong sales backlog

## Compelling valuation

- ~\$60M market cap
- \$15.3M working capital
- No borrowed-money debt

3

## Platform-as-a-Service (PaaS) business model

- Onboard data platform for intelligent transportation in smart cities
- ~50,000 intelligent mobile data collector units installed
- ~3,500 customers

2

## AI, video analytics, data – key growth drivers

- “Black-box” for buses & trains to improve safety and aid accident investigations
- Video monitoring & enforcement are now a necessity

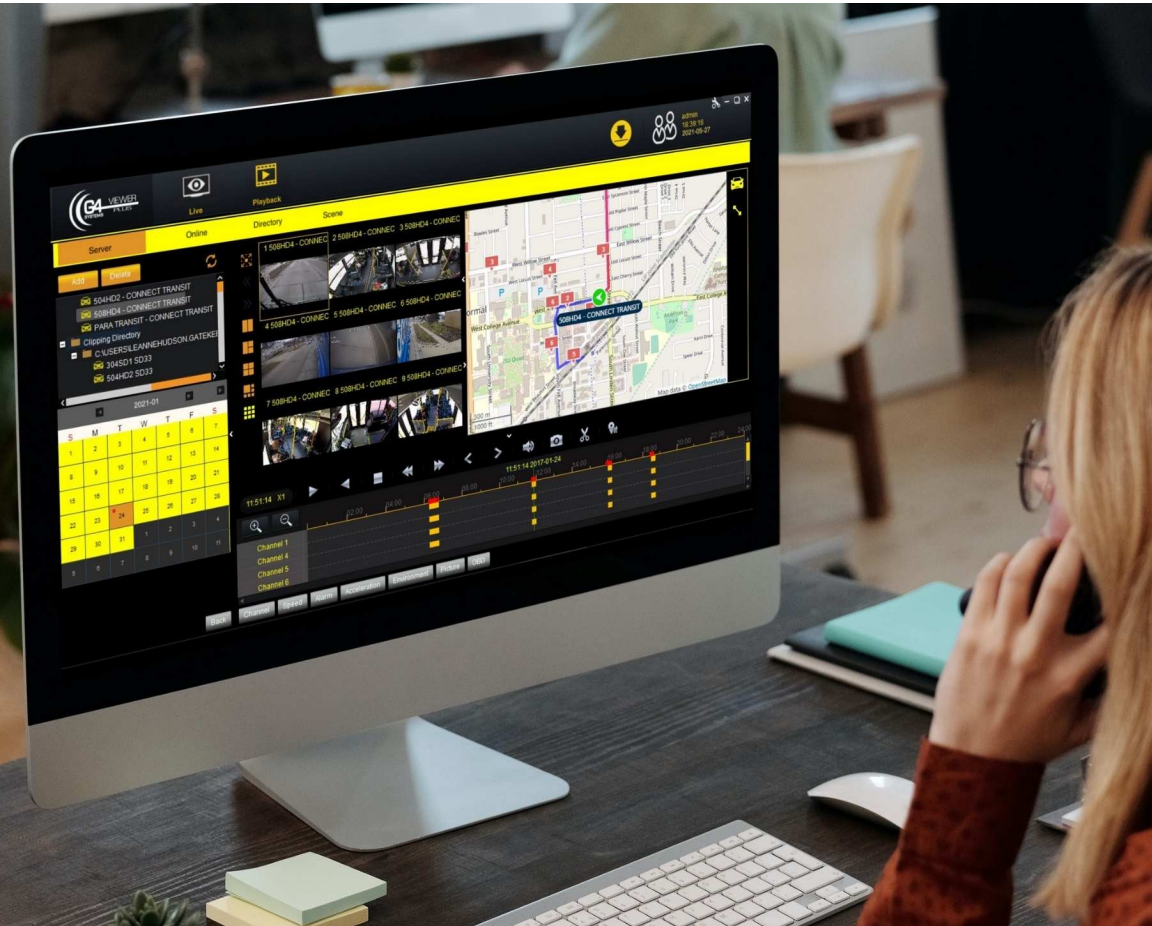
4

## Established, emerging data company

- Data devices & video surveillance on public transportation vehicles

*(Expressed in Canadian currency)*

# VIDEO ANALYTICS & DATA SOLUTION



## Video now dominates in passenger transportation

- 80% of transit buses have video
- Increasing reliance on video for enforcement / fraud prevention
- Hi-def IP cameras create enormous amounts of video data
- Difficult to wirelessly transmit, store, and monitor
- Video data is now too extensive to manage manually

1

### Gatekeeper cloud-based video analytics software

- Event-driven video capture (e.g. erratic driving behavior)
- Alarm notification when camera image is covered/compromised
- Video compression algorithms
- ‘System Health Check’ reports, for active system maintenance
- Snippet capture, facial blurring, allows video segments to be easily emailed

2

### Gatekeeper processes video data “at the edge”

- On-vehicle mobile data collectors & video processing

# PLATFORM-AS-A-SERVICE (PaaS) BUSINESS MODEL

Gatekeeper is the “computer on-board” school bus fleets, transit buses, trains, and municipal vehicle assets

- Over 50,000 intelligent Mobile Data Collectors installed



## Data platform for Smart Cities & Intelligent Transportation

- On-vehicle digital recording devices (DVRs), GPS enabled, multiple data points, video, alarms, analytics
- Wirelessly connected, bi-directional data to a moving vehicle
- Video analytics for illegal vehicle passing, license plate capture, ticket issuance
- Transit-lane violation enforcement, passenger counting, evidence management and infraction ticketing
- Remote monitoring & management of vehicle assets



## Adding new data layers

- Passenger counting, driver behavior, stop-arm violation evidence
- Mobile Wi-Fi system for school bus
- Bus lane infraction enforcement
  - Important since increases in Uber/taxi drop-offs in the bus lanes impedes public transit efficiency



# INTELLIGENT MOBILE DATA COLLECTORS (MDCs)

## ~50,000 data collectors installed

- On school buses, transit buses and trains
- Collecting vehicle data such as video, audio, GPS, time, door open/close

## Ruggedized, crashworthy DVRs

- 8 TB of video storage recording 24 high-def IP cameras Collecting vehicle data such as video, audio, GPS, time, door open/close,
- Serve as the "black box" to aid in transit accident investigations

## Wireless Connectivity

- Wi-Fi enabled, mobile connected, or mobile enabled , allowing public transport assets to become part of the intelligent transportation solution in a Smart City ecosystem



# HOSTED SERVICES: RECURRING REVENUE BUSINESS MODEL

- Real-time wireless connectivity to the whole fleet
- AI-assisted software helps screen enormous amounts of video for incident management and evidence
- Comprehensive video management software, cloud-based service offering



# SCHOOL BUS INDUSTRY: UNDERGOING A MAJOR TECHNOLOGY UPGRADE

Technology adoption on school buses has paled in comparison to technology adoption on automobiles over the past decade

## U.S. Department of Education Technology Spending

- \$122 Billion of spending announced to help schools reopen safely, March 17, 2021 ([ed.gov news](#))
- In the US, ~484,000 yellow school buses transport ~21.4 million students daily, ~40,000 new school buses are manufactured annually

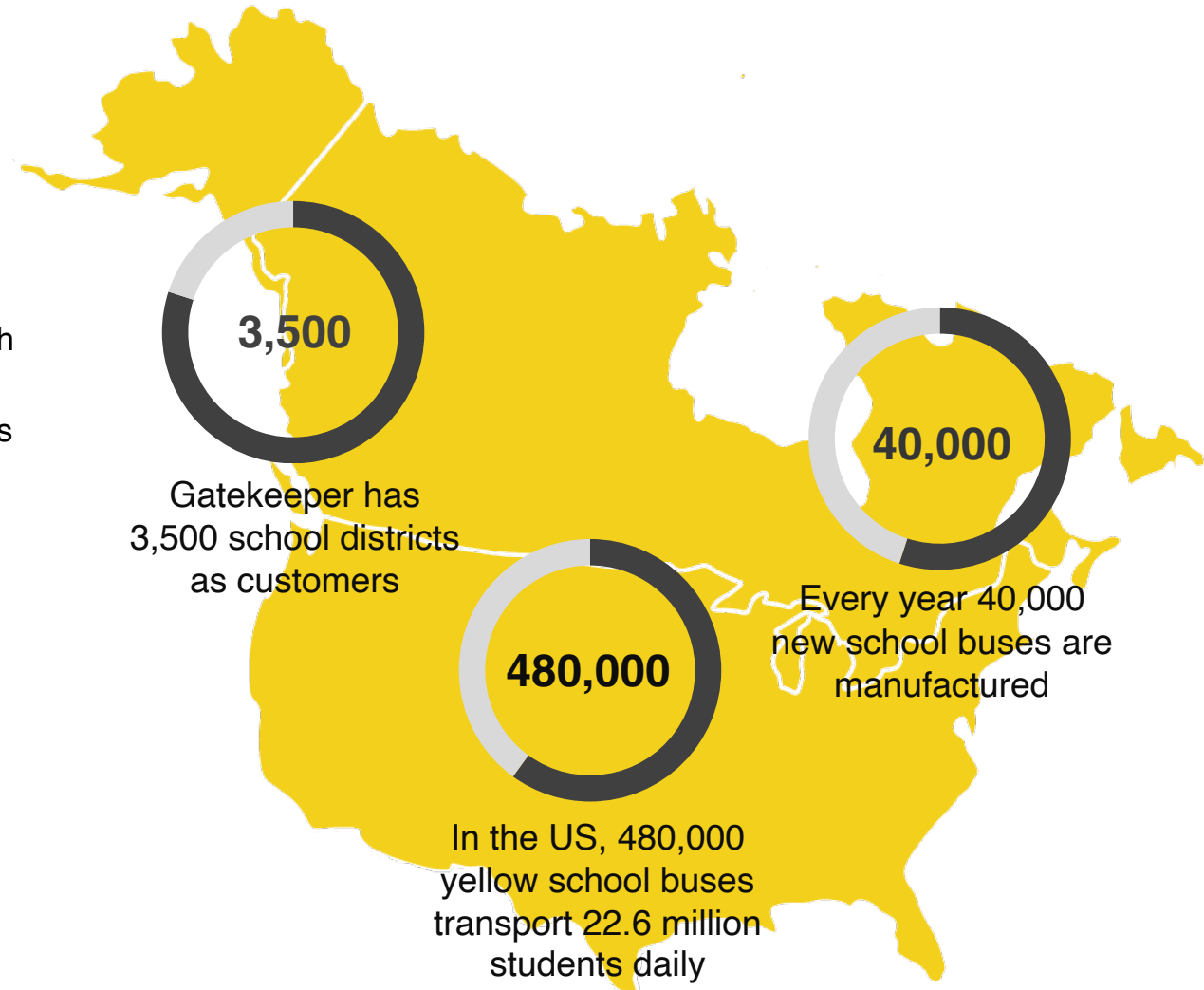
## Gatekeeper has over 3,500 school districts customers

- Customers in every state and province in North America
- Well established CRM system, contact data for all 13,000 school districts, 70,000 database customer contacts

## Gatekeeper has significant industry experience

- Over 50,000 intelligent Mobile Data Collectors installed on school buses
- Over 100,000 in-vehicle video devices installed on school buses

## Gatekeeper has a comprehensive suite of technology solutions for school buses





# SCHOOL BUS STUDENT PROTECTOR

## Capture every detail of a stop-arm infraction

NASDPTS estimates more than **43.5 million illegal school bus passings** per year in the US alone.

(Source: [www.nasdpts.org/stop-arm-violations](http://www.nasdpts.org/stop-arm-violations))

1

### Automatically capture every violation

- High-speed, multi-lane license plate reader to capture stop-arm violators, in any conditions, day or night

2

### Create citations easily

- Video analytics software allows districts to issue tickets automatically
- Web-based citation management system provides full control of a citation from its creation to its payment.



# SCHOOL BUS MOBILE Wi-Fi SYSTEM

## Wi-Fi Solutions

- Turn school buses into mobile Wi-Fi hotspots with Gatekeeper Mobile Wi-Fi System (MWS)
- Internet access is available on school buses to the vehicle is in motion or parked
- MWS enabled school buses can be parked and provide internet in underserved communities
- Gatekeeper MWS is routed through the school's firewall and content filter, providing a safe internet experience for students



## Wi-Fi Benefits

- MWS enabled buses help to close the digital divide so all students have access to the tools they need to succeed
- Leverage the average of 180 hours spent on the school bus each year by allowing students to access research material to complete assignments
- School buses with MWS can also be configured to provide remote access to video cameras, DVR storage, and GPS location

## Cellular Connectivity

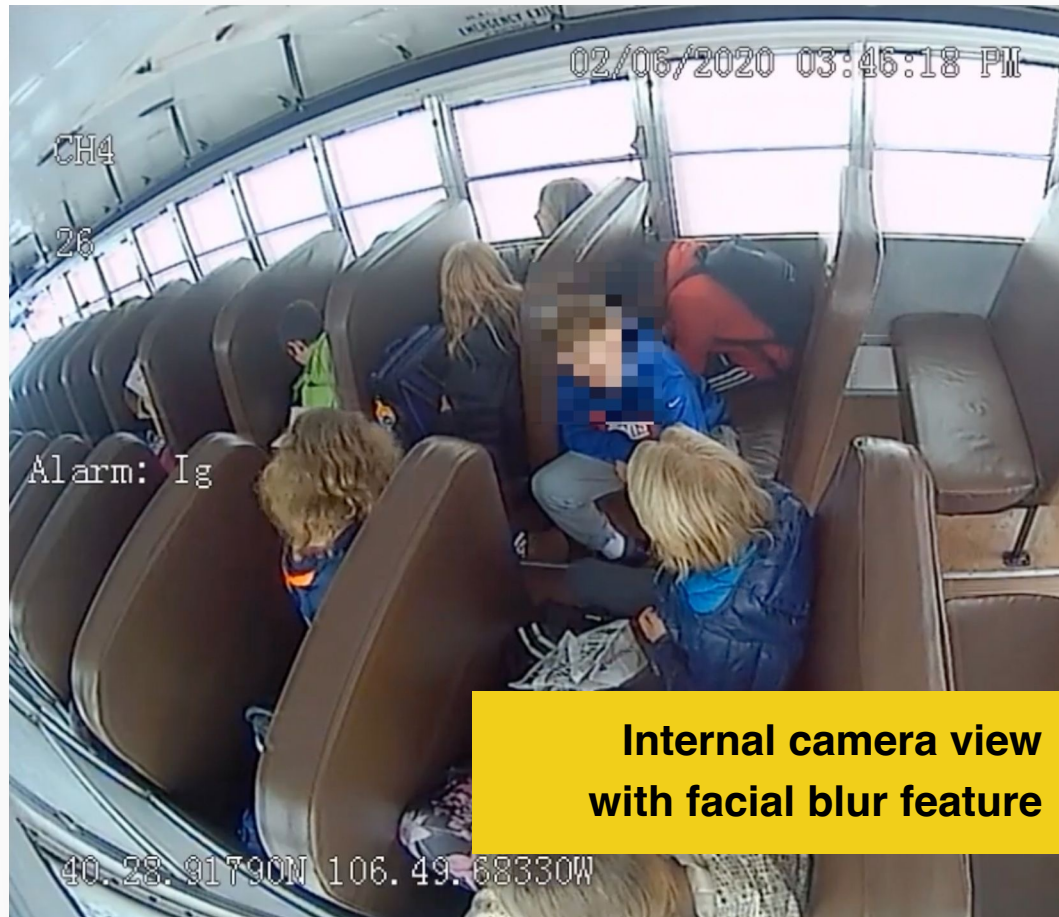
Gatekeeper's all in one mobile modem provides Wi-Fi and Cellular connectivity



## Helping Students

28m households in the U.S. do not have high speed internet at home

# SCHOOL BUS INTERIOR CAMERAS



## Capture Every Moment

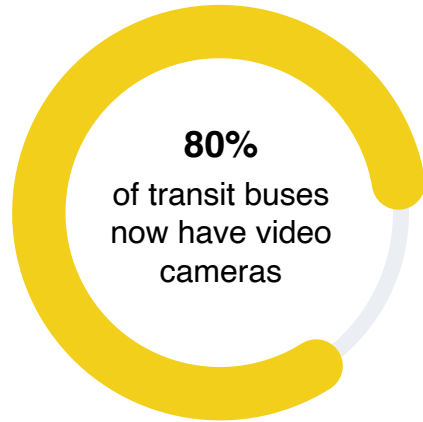
- Record HD video and audio
- Use Gatekeeper's Wide Angle Cameras to capture every angle



## Keeping Children Safe

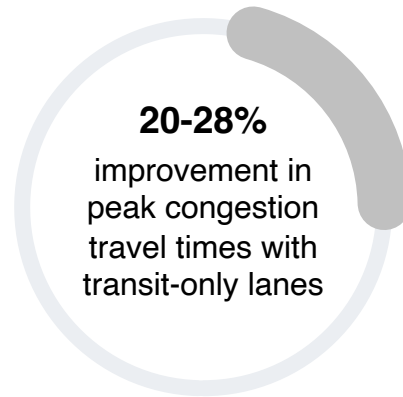
- Prevent incidence of bullying and vandalism
- Safeguard children's privacy with facial blurring technology

# TRANSIT MARKET: SIGNIFICANT GROWTH DRIVER



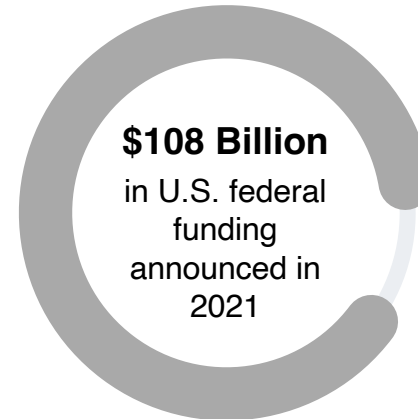
## Video-based evidence for transit, bus & rail

- Public Transit Authorities embracing video surveillance solutions to reduce fraudulent claims and improve passenger safety
- 183,000 transit vehicles in US
- 19,000 transit vehicles in Canada



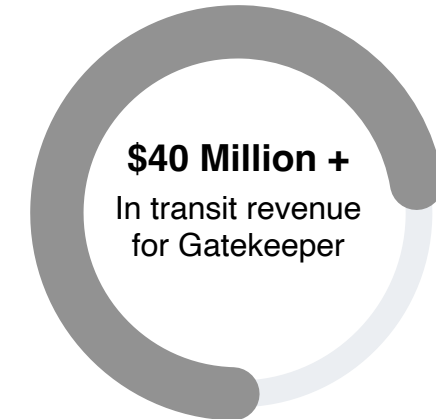
## Transit authorities embracing emerging technologies

- Bus lane infraction cameras
- License plate capture of vehicles illegally passing buses/street cars while passengers are loading/unloading
- Passenger counting
- Intelligent routing



## Increased transit funding within \$1.2 trillion Bipartisan Infrastructure Deal

- Over 10,000 transit vehicles to be upgraded



## Gatekeeper entered the transit market in 2018

- Resulting in over \$40 million in revenue from the transit industry vertical

# STRATEGIC TRANSIT CUSTOMER: SEPTA

## Southeastern Pennsylvania Transportation Authority

- 6th largest transit authority in the US
- Ridership of over 300 million passenger rides annually
- 3,600 vehicles including approximately 970 trains

1

### SEPTA - a leading transit authority in use of video

- Actively using vehicle video surveillance to evaluate and defend claims, monitor system safety and security, and protect against fraud
- US\$22M/yr. savings in false liability claims by using video evidence
- Sophisticated video-evidence installation
- Over 27,000 video cameras installed on vehicles & stations

2

### SEPTA chose Gatekeeper for its software, video analytics, specialized DVRs

- ~\$40M in new-business revenue contribution since 2018
- Recurring services contract \$2.4M/yr.



1 MILLION DAILY PASSENGER TRIPS



# AUTOMATED LANE ENFORCEMENT (ALE)

## AI and Video Analytics

- Captures vehicle license plate of lane violations



## Reduce transit lane violations

- Custom-designed for transit applications
- Launched July 2021

## Large market opportunity

- Traffic congestion in cities is a concern, post-pandemic due to user preference toward ride-hailing vehicles vs. transit
- Currently conducting live transit trials

## Includes specialized applications

- Vehicles partially obstructing the bus lane
- Vehicles in the bus lane that signal a legal right-hand turn, but illegally continue to drive straight
- Vehicles passing streetcars when passengers are boarding or deboarding

# VIDEO & DATA RECORDERS FOR PASSENGER TRAINS

**The Federal Railroad Administration has announced a final rule requiring the installation of inward- and outward-facing image recording devices**

- On all passenger train lead locomotives providing scheduled intercity rail passenger or commuter service
- FRA press release October 12, 2023, [here](#). Compliance deadline is October 12, 2027.

**National Transportation Safety Board wants all rail transit vehicles equipped with inward and outward facing cameras**

- NTSB press release [here](#)

**Gatekeeper is a well-established technology provider**

- Offers NTBSP-compliant, crash-worthy digital video recorders designed to meet EN50155 international standards for electronics on passenger trains
- Has already equipped hundreds of passenger trains for SEPTA. For example, Gatekeeper announced completion of a \$6.3 million contract for video recorders on trains in October 2020.

**Represents significant business opportunity for Gatekeeper**



# EXTERIOR VIDEO SOLUTIONS

## Safer transportation for passengers and drivers

- Protect drivers against lawsuits, false liability claims, violence, vandalism, road rage, and theft
- Eliminate blind spots with 360° surround vision
- Help in training new drivers, monitoring driver behavior, and coaching the driving habits of company drivers
- Driver performance monitoring (speed, swerving, braking)
- Cameras built to withstand extreme weather conditions

## Allows fleet managers to:

- View live-streaming video to assess emergency situations,
- View historical data
- Systems are equipped with driver alert button which automatically uploads corresponding video & alarm to monitoring center
- Video is synchronized with GPS location, improving incident response times





# ENABLING SMART CITIES: AI & ANALYTICS

## Intelligent transit planning

- Analytics is becoming increasingly important
- Collecting and analyzing data is essential for maximizing resources and improving services

## Interconnecting passenger-transport vehicles

- Wirelessly connected on-board data collectors
  - Intelligent routing
  - Surveillance
- Improving traffic flow
- Efficient public transit



## Protecting passengers

- Temperature checking, contact tracing
- Video evidence, flagging abnormal passenger behavior
- People counting, facial recognition

## Safer, smarter communities

- Transportation solutions for public transit and schools is complex, and each community has their own needs and challenges
- Gatekeeper's AI & video analytics solutions helps communities plan and improve services with data-driven decisions specific to their needs

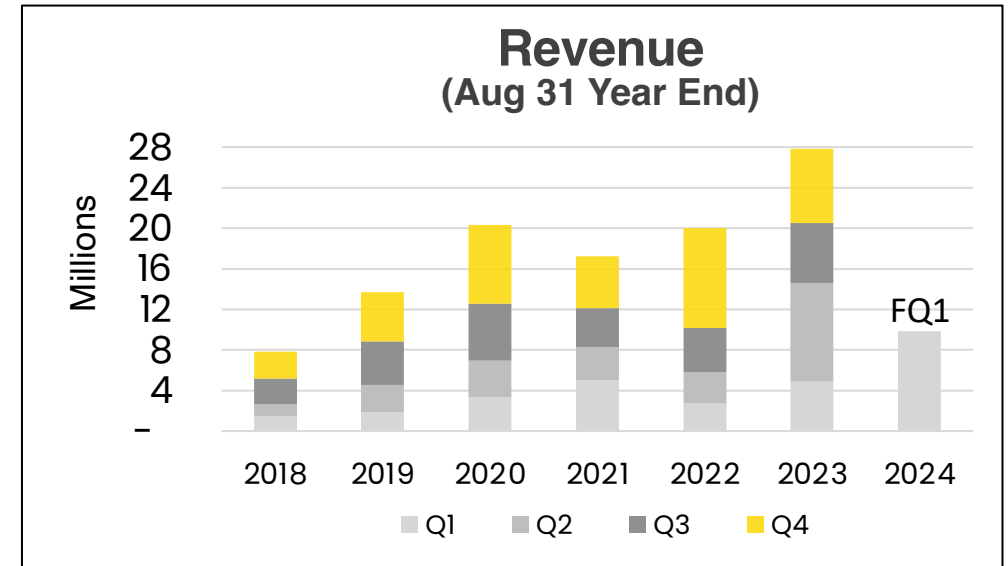
# FINANCIAL INFORMATION (\$CAD)

Shares Outstanding	92 M
Stock Options	7.7 M
Fully Diluted Shares	99.6 M
Market Cap (@ \$0.65/sh.)	~\$60 M

	<u>Fiscal Year</u> <u>Aug 31, 2023</u>	<u>Fiscal Q1</u> <u>Nov 30, 2023</u>
Revenue	\$27.8M	\$9.8M
Gross Profit	\$ 12.5 M 45%	\$ 4.8 M 49%
Total Comprehensive Income	\$ 2.9 M \$0.03 /sh.	\$ 2.3 M \$0.02/sh.
Working Capital		\$ 13.4 M

**Notes:**

- \$8 M working capital credit facilities in place with TD Bank, unused at Nov 30, 2023.
- Insider ownership ~ 14%



1 Year stock chart (GSI:TSX-V)

# BOARD OF DIRECTORS

---



**Doug Dymant**  
DIRECTOR & CHAIRMAN

- Founded Gatekeeper Systems in 1997 and took the company public 2013
- Former VP Marketing and Director at Silent Witness; founded Security Products Division



**Charlie Bruce**  
DIRECTOR

- Former COO First Group America and National Express
- Founded Transportation Advisory Group (TAG) in 2015, President and CEO of TAG, providing advisory services to the student transportation industry
- Former Board Member for the National School Transportation Association and New York School Bus Contractors Association



**David Stumpo**  
DIRECTOR

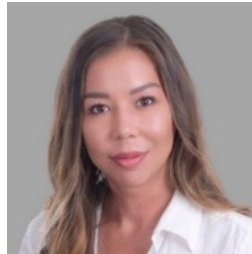
- Founder & CEO of the American Public Transit Exams Institute (APTREX)
- Former CEO Coast Mountain Bus (Formerly BC Transit) and San Francisco Municipal Railway (MUNI)
- Executive Director for the Southern California Regional Transit Training Consortium (SCRTTC). 40 years' experience within the public transit industry

# SENIOR MANAGEMENT

---



**Doug Dymant**  
President & CEO



**Kelsey Chin**  
CFO



**Jeff Gruban**  
VP Sales – Transit



**Doug Fraser**  
VP Programs &  
Products



**Valarie Higgins**  
VP Sales – Schools



**Jason Harris**  
VP Student  
Protector Programs

# CONTACT INFORMATION



## **Corporate Contact:**

Doug Dymont, President & CEO

604-864-6187

[DDymont@gatekeeper-systems.com](mailto:DDymont@gatekeeper-systems.com)



## **Gatekeeper Systems Inc.**

301-31127 Wheel Avenue

Abbotsford, BC V2T 6H1 Canada

## **Gatekeeper Systems USA Inc.**

7-200 Rittenhouse Circle East

Bristol, PA 19007 USA



**TSX Venture: GSI**

**OTC Markets: GKPRF**