

## **FIXED-SITE WIRELESS ACCESS POINT**

Utilizing Wi-Fi 2.4 GHz (802.11 b/g/n) and 5 GHz (802.11a/n/ac), Gatekeeper offers a rugged industrial-rated Access Point (AP) and antennas for secure and high-speed video downloading. Video incidents are downloaded automatically with Gatekeeper's G4 Viewer Plus software as buses return to the bus yard. Gatekeeper's access point has a waterproof metal enclosure (IP66). Typically the Access Point and antennas are mounted on a mast secured to the exterior of a building.

# **GATEKEEPER**

## ACCESS POINT & ANTENNAS

## **INDUSTRIAL GRADE ACCESS POINT WITH FAST DOWNLOADING AND WIDE WIRELESS COVERAGE**



### **KEY SPECIFICATIONS**

- 2.4 GHz and 5 GHz Access Point and antennas (90-degree, 120-degree, and Omni directional).
- Live video streaming and downloading over Wi-Fi or cellular (3G/4G) in the depot.
- In-yard Wi-Fi coverage up to 500ft.
- Wi-Fi 2.4 GHz (802.11 b/g/n) and 5 GHz (802.11a/n/ac) for secure and fast downloading.
- Industrial grade Access Point and in-bus radios.
- Auto scheduled downloading.
- Download video from push of driver alarm button.

## AUTO SCHEDULED DOWNLOADING

## GATEKEEPER

Gatekeeper Systems Inc.  
301-31127 Wheel Avenue  
Abbotsford, BC V2T 6H1  
Canada

Gatekeeper Systems USA Inc.  
200 Rittenhouse Circle Suite 7E  
Bristol, PA 19007  
USA

### SPECIFICATION

WIRELESS STANDARDS	802.11 ac/a/n at 5GHz 802.11 b/g/n at 2.4GHz
WIRELESS 5GHz MAX DATA RATE	867 Mbit/s
WIRELESS 2.4GHz MAX DATA RATE	300 Mbit/s
OPERATING TEMPERATURE	-40°C to 70°C
DIMENSIONS	143 x 247 x 48mm (PCB)

### POWER

POE IN	Passive PoE
POE IN INPUT VOLTAGE	8-30 V
MAX POWER CONSUMPTION	19W

### INTERFACE

10/100/1000 NETWORK PORT	RJ45
ANTENNA PORTS	2 x RPSMA

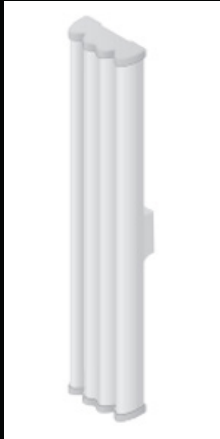
### COMPUTING RESOURCES

CPU	IPQ4019 720 MHz
RAM	256 MB

PERFORMANCE TRANSMIT / RECEIVE 5 GHZ	TRANSMIT (DBM)	RECEIVE SENSITIVITY
6 MBit/s	30	-96
54 MBit/s	27	-80
MCS0	30	-96
MCS7	26	-75
MCS9	23	-72
PERFORMANCE TRANSMIT / RECEIVE (2.4 GHZ)	TRANSMIT (DBM)	RECEIVE SENSITIVITY
1 MBit/s	30	-100
11 MBit/s	30	-94
6 MBit/s	30	-96
54 MBit/s	27	-80
MCS0	30	-96
MCS7	26	-75

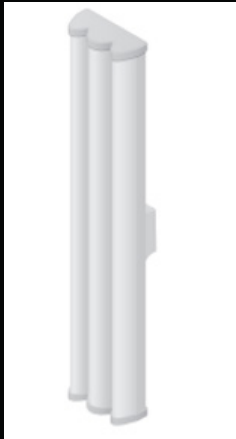
## ANTENNAS

Gatekeeper offers four of the following antenna options – a 5 GHz 90-degree antenna, a 5GHz 120-degree antenna, a 2.4 GHz / 5 GHz dual band 90-degree antenna and a 5 GHz Omni directional antenna. The antennas provide wireless coverage up to 500 ft.



5 GHz 90-degree directional antenna

- 20 dBi gain
- Effective range of 500 ft



5 GHz 120-degree directional antenna

- 19 dBi gain
- Effective range of 500 ft



5 GHz Omni directional antenna

- 10 dBi gain
- Effective range of 250 ft



2.4 GHz / 5 GHz dual band 90-degree directional antenna

- 14 dBi gain
- Effective range of 500 ft