



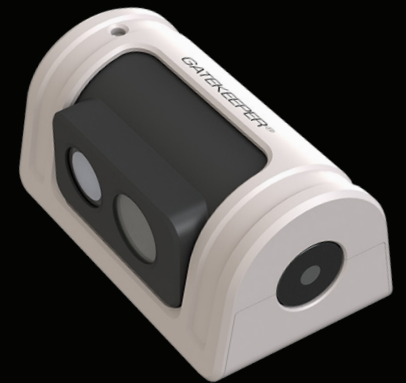
EXTERIOR 1080P AHD CAMERA

Gatekeeper's light weight and compact 1080p AHD camera is made of metal, and built to survive rugged and vandal susceptible environments. It has been thermal, vibration, and shock tested to ensure it will withstand all weather and tough mobile conditions. The Sony CMOS imaging sensor uses built in infrared to deliver outstanding, clear image quality in both day and nighttime conditions. The compact, miniature nature of the camera's design makes it the perfect camera choice for outdoor applications where installations can be challenging.

GATEKEEPER

TXM12 CAMERA

**COMPACT
LIGHT WEIGHT
BUILT FOR ALL WEATHER**



KEY FEATURES

- 1080P High Definition Camera
- Full Metal Design for rugged applications
- All weatherproof
- Light weight
- Compact size
- USA – National Defense Authorization Act (NDAA) compliant

EXTERIOR 1080P HIGH DEFINITION CAMERA

GATEKEEPER

Gatekeeper Systems Inc.
301-31127 Wheel Avenue
Abbotsford, BC V2T 6H1
Canada

Gatekeeper Systems USA Inc.
7-200 Rittenhouse Circle East
Bristol, PA 19007
United States

VIDEO

IMAGING SENSOR 1/2.8" Sony 2.13M pixels CMOS
MINIMUM ILLUMINATION 0.05 Lux (IR On), F1.2
RESOLUTION 1080p (1920x1080), 720p optional
SYNC Internal Sync
SCANNING SYSTEM Progressive scanning
S/N RATIO ≥ 50db
ELECTRONIC SHUTTER 1/30s - 1/10,000s
WHITE BALANCE MODE Auto
COLOR TO BLACK External synchronization control
GAMMA CORRECTION 0.55
FRAME Up to 30 FPS
VIDEO OUTPUT AHD coaxial HD standard
CABLING 4 Pin DIN JACK

AUDIO

No

IR DISTANCE

10m - 15m (LED*1)

LENS

AVAILABLE LENSES 3mm, 6mm, 8mm
APERTURE Fixed aperture F1.8

POWER

VOLTAGE DC 12V
CONSUMPTION 230mA/DC12V (IR On)

PHYSICAL

IP RATING IP67
OPERATING TEMPERATURE -40°F to +158°F (-40°C to +70°C)
OPERATING HUMIDITY Under 90% (Non-Condensing)
DIMENSIONS 3.76" x 2.28" x 2.0" (95.6mm x 57.8mm x 50.8mm)

