



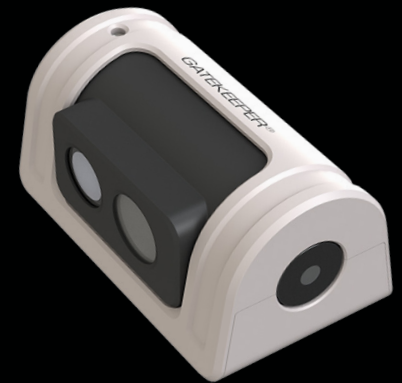
EXTERIOR 1080P IP CAMERA

TXM12 IP v3 is a 1080p (1920 x 1080) exterior camera. The CMOS imaging sensor produces outstanding image quality in both day and night conditions. Built rugged, the camera is designed to operate over the extreme temperatures and vibration found in vehicles. TXM12 IP v3 is IP67. Its metal housing makes the camera vandal resistant. The camera can be mounted either horizontally or vertically to meet different installation requirements.

GATEKEEPER

TXM12 IP v3 CAMERA

**COMPACT
LIGHT WEIGHT
BUILT FOR ALL WEATHER**



KEY FEATURES

- 1080P High Definition Camera
- Full Metal Design for rugged applications
- All weatherproof
- Light weight
- Compact size
- USA – National Defense Authorization Act (NDAA) compliant

EXTERIOR 1080P HIGH DEFINITION CAMERA

GATEKEEPER

Gatekeeper Systems Inc.
301-31127 Wheel Avenue
Abbotsford, BC V2T 6H1
Canada

Gatekeeper Systems USA Inc.
7-200 Rittenhouse Circle East
Bristol, PA 19007
United States

VIDEO

IMAGING SENSOR	1/2.8" back illuminated 2M pixels CMOS
RESOLUTION	1080p (1920x1080) 720p (1280 x 720) D1 (704 x 480)
S/N RATIO	≥ 50db
ELECTRONIC SHUTTER	1/30 - 1/10,000
FRAME RATES	Up to 30 FPS
VIDEO COMPRESSION	H.264 / H.265
BIT RATE	512Kbps to 8Mbps (default 6Mbps)
DUAL STREAM	Main Stream: 1080p (1920 x1080) 720p (1280 x 720) D1 (720 x 480)

NETWORK

NETWORK PORT	10M / 100M
NETWORK PROTOCOL CONFIGURATION	TCP/IP, HTTP, DHCP, RTSP, NTP, FTP Built-in web server; Support Internet Explorer browser

AUDIO

No

IR

1 LED 10m – 20m

PHOTO SENSOR

Configurable (one located at each end of the camera)

LENS

AVAILABLE LENSES	2.8mm, 4mm, 6mm, 8mm
APERTURE	Fixed aperture F1.8

POWER

VOLTAGE	DC 12V Nominal
CONSUMPTION	<2W (Day) and <5W (Night)

PHYSICAL

IP RATING	IP67
OPERATING TEMPERATURE	-40°F to +158°F (-40°C to +70°C)
MOUNTING ORIENTATION	Vertical or Horizontal
DIMENSIONS	3.8" L x 2.3" W x 2.0" H 95.6mm L x 57.8mm W x 50.8mm H

