

G4 Viewer Plus version 2.6.2.12

This document is the release note for G4 Viewer Plus version 2.6.2.12. It includes the major features and recommended settings for this software version.

1. Support Gatekeeper DVRs with a new file system and compatible with Gatekeeper existing DVRs

Gatekeeper's newly launched DVRs in 2019 are using a new file system. The DVRs are Y35 v2, Y35 HD, and Y58. Customers must use G4 Viewer Plus version 2.6.2.12 or above for these DVRs.

G4 Viewer Plus 2.6.2.12 is compatible with all the existing DVRs offered by Gatekeeper – 504HD1a, 504HD2a, 508HD4a, Y35, Y724, and Y62DC

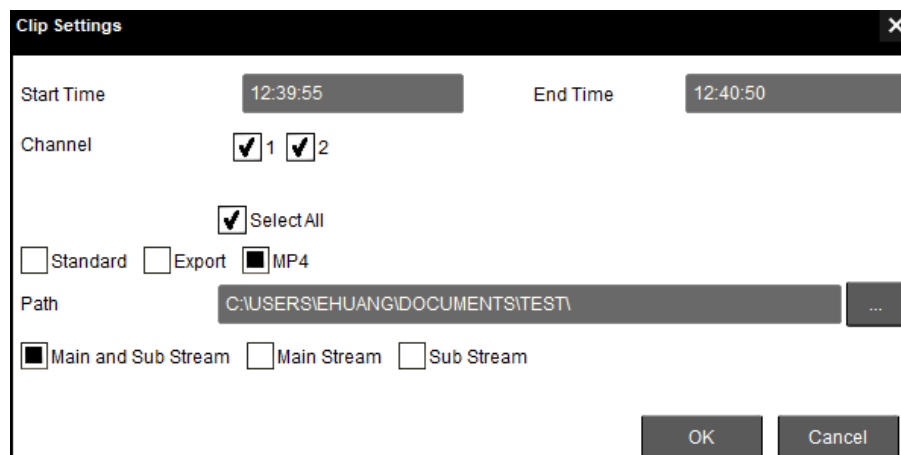
2. Must upgrade G4 Enterprise to version 2.6.2 or above when using G4 Viewer Plus version 2.6.2.12

G4 Enterprise server software must be upgraded to version 2.6.2 or above when using G4 Viewer Plus version 2.6.2.12.

G4 Enterprise version 2.6.2 or above offer new web-based evidence center and alarm center functionality that is only compatible with G4 Viewer Plus version 2.6.2.12 or above.

3. Support clip as MP4 file

G4 Viewer Plus v2.6.2.12 support clips to be exported as MP4 files.

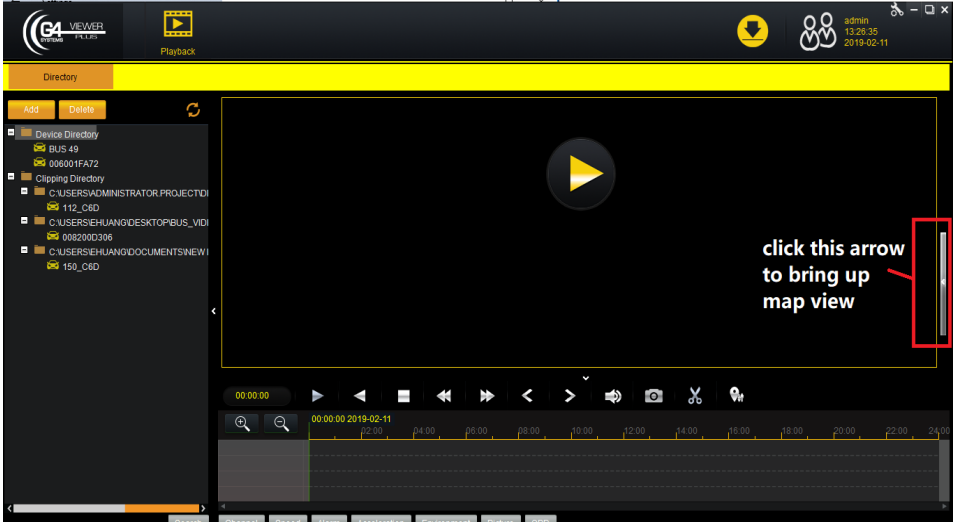


GATEKEEPER

4. Default map is OpenStreetMap

Version 2.5.1.21 and above	Default map has changed to OpenStreetMap. User can choose to use OpenStreetMap (recommended) or Google map in System Settings.
----------------------------	---

5. Default map view is hidden

Version 2.5.1.21 and above	<p>After installation, launch G4 Viewer Plus for first time, there is NO map view.</p> <p>To see the map view, click on the arrow icon shown in the screenshot below:</p>  <p>The screenshot shows the G4 Viewer Plus application window. The title bar includes the G4 logo, 'G4 VIEWER PLUS', a 'Playback' button, a download icon, a user profile icon for 'admin', and the date '2019-02-11'. The main interface has a yellow 'Directory' header. On the left, there is a tree view under 'Device Directory' and 'Clipping Directory'. The central area is a large black rectangle with a yellow play button icon. A red box on the right side of this rectangle highlights a small white arrow icon pointing left. A text label 'click this arrow to bring up map view' is positioned next to the arrow icon.</p>
----------------------------	---

6. Miniplayer LARGE File Downloads

Support for two Miniplayer (Export) file formats for video clip:

Single Executable File and Separate Executable and Data File

Version 2.5.1.21 and above	<p>Support two Miniplayer file formats: Single Executable File and Separate Executable and Data File</p> <p><u>Single Executable File</u> Export video clips and sensor data into a single executable *.EXE file. Size limitation: 4GB</p> <p><u>Separate Executable and Data File</u> When the .EXE format (miniplayer) is selected two files are produced a) the video player executable file (*.EXE file), and b) the 'data' file (*.G4V file extension) This has been tested to 1 hour of video, 10 cameras, 720p 15 fps (approximately 16GB) files</p> <p>To choose one of the export file formats: In G4Viewer Plus, go to System Settings -> Mini-Player Format</p>
----------------------------	---

7. New blur feature

Version 2.5.1.21 and above	<p>Support time based blurring User can select specific blur region and the duration they want to make the blurring.</p> <p>Support entire video blurring (new feature) The blurring region selected is for the entire video clip.</p>
----------------------------	--

8. Recommended installation procedure

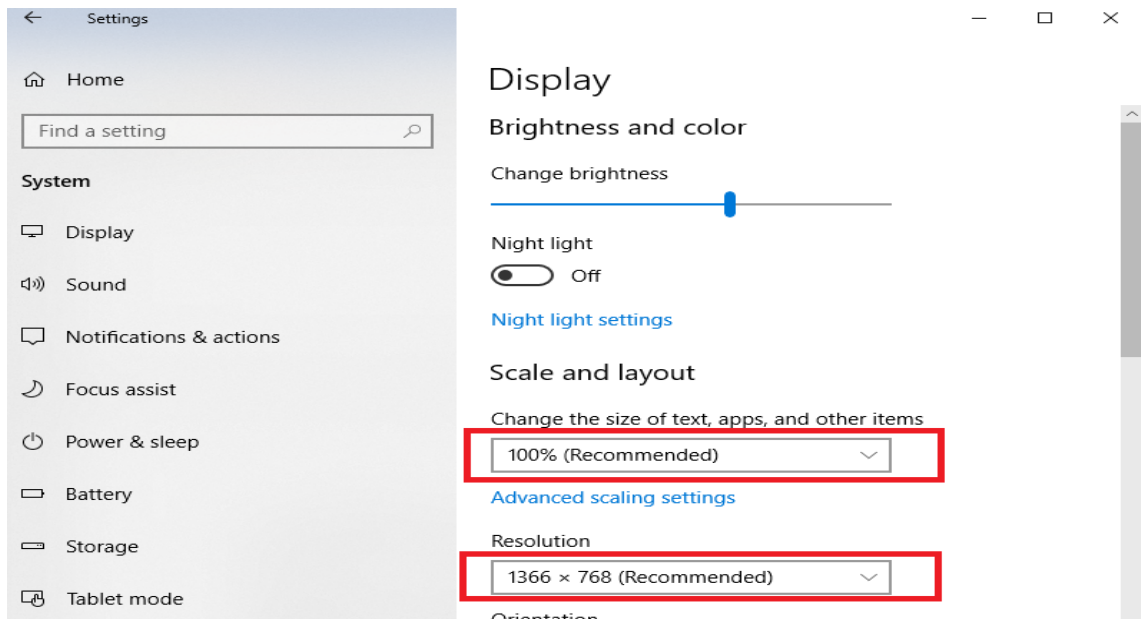
Follow the following steps to install G4 Viewer Plus version 2.5.1.21 on PC:

- Uninstall previous G4 Viewer Plus version
- Reboot PC after the uninstallation
- Install G4 Viewer Plus version 2.5.1.21
- Reboot PC after the installation

9. Use Windows recommended display settings for viewing the G4 Viewer Plus

For Windows 10, go to Settings -> System -> Display.

Choose the Recommended settings for Scale and layout and Resolution.



***If there are any viewing problems (for example, unable to see or click icons properly), please contact Customer Care team.**

10. Minimum system requirement for video playback

The playback of High Definition Video is very resource intensive. Please use the following guidelines for a typical modern PC.

Exceeding these playback guidelines may result in jumpy video, stalled video, slow updating on some video windows, black screens etc.

Customers can evaluate their own PC by opening up Task Manager (press Cntrl, Alt and Del keys simultaneously and then select Task Manager). Then click on the performance tab so see how much of the CPU /GPU resources are being used.

Gatekeeper recommends not exceeding 90% of the CPU or GPU resource. If these values exceed 90% then reduce the number of simultaneous channels to be played back.

GATEKEEPER

Minimum System Configuration	
Processor	i5-6400 2.7GHz
RAM	8 GB
Video Card	NVIDIA GeForce GT 720

G4 Viewer Plus (version 2.5.1.21 and above) Video Playback Performance		
Resolution / Frame / Quality	Local Device Video Playback (max number of channels)	System Resource Usage
1080p / 15 / 1	8	CPU:80-90% GPU:40-60%
720p / 30 / 1	9	CPU:80-90% GPU:30-60%
720p / 15 / 1	10	CPU:80-90% GPU:30-50%

System Requirement for Video Playback of Gatekeeper's SP25

The following is the system requirement when playback SP25 camera (two 5 MP cameras) and one AHD camera 1080P, 20 FPS, Quality 1.

System Configuration	
Processor	Intel 7 th gen (Kaby Lake) i5 4 core processor 3.0GHz or better
RAM	minimum 8 GB
Video Card	NVIDIA GeForce GT 720 or better
Storage	7200 RPM HDD or better