



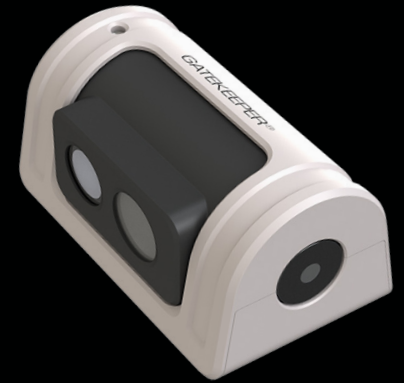
EXTERIOR 1080P IP CAMERA

Gatekeeper's light weight and compact 1080p IP camera is made of metal, and built to survive rugged and vandal susceptible environments. It has been thermal, vibration, and shock tested to ensure it will withstand all weather and tough mobile conditions. The Sony CMOS imaging sensor uses built in infrared to deliver outstanding, clear image quality in both day and nighttime conditions. The compact, miniature nature of the camera's design makes it the perfect camera choice for outdoor applications where installations can be challenging.

GATEKEEPER

TXM12 IP CAMERA

**COMPACT
LIGHT WEIGHT
BUILT FOR ALL WEATHER**



KEY FEATURES

- 1080P High Definition Camera
- Full Metal Design for rugged applications
- All weatherproof
- Light weight
- Compact size
- No audio

EXTERIOR 1080P HIGH DEFINITION CAMERA

GATEKEEPER

Gatekeeper Systems Inc.
301-31127 Wheel Avenue
Abbotsford, BC V2T 6H1
Canada

Gatekeeper Systems USA Inc.
7-200 Rittenhouse Circle East
Bristol, PA 19007
United States

VIDEO

| | |
|--------------------|---|
| IMAGING SENSOR | 1/2.8" back illuminated 2M pixels CMOS |
| PROCESSOR | Sony |
| RESOLUTION | 1080p (1920x1080) |
| S/N RATIO | ≥ 50db |
| ELECTRONIC SHUTTER | 1/30 - 1/10,000 |
| FRAME RATES | Up to 30 FPS |
| VIDEO COMPRESSION | H.264 / H.265 |
| BIT RATE | 512Kbps to 12Mbps (default 8Mbps) |
| DUAL STREAM | Main Stream: 1920 x 1080 / 1280 x 720 Sub Stream: VGA, CIF, D1 |

NETWORK

| | |
|--------------------------------|--|
| NETWORK PORT | 10M / 100M |
| NETWORK PROTOCOL CONFIGURATION | TCP/IP, HTTP, DHCP, RTSP, NTP, FTP Built-in web server; Support Internet Explorer browser |

AUDIO

No

IR

1 LED 10m – 20m

PHOTO SENSOR

Configurable (one located at each end of the camera)

LENS

| | |
|------------------|----------------------|
| AVAILABLE LENSES | 2.8mm, 4mm, 6mm, 8mm |
| APERTURE | Fixed aperture F1.8 |

POWER

| | |
|-----------------------|---------------------|
| POWER SUPPLY | DC 12V (PON) |
| CONSUMPTION (MAXIMUM) | 230mA/DC12V (IR On) |

PHYSICAL

| | |
|-----------------------|--|
| IP RATING | IP67 |
| OPERATING TEMPERATURE | -40°F to +158°F (-40°C to +70°C) |
| MOUNTING ORIENTATION | Vertical or Horizontal |
| DIMENSIONS | 3.8" L x 2.3" W x 2.0" H 95.6mm L x 57.8mm W x 50.8mm H |

