



S205 Camera Audio Connection Inspection

Attention : The instruction sheet applies to Gatekeeper S205 Cameras only.

Symptom : Some cameras have low or no audio.

Instructions :

- 1) Check to ensure that the camera with defective audio is a S205 camera. The camera should have a "S205" label affixed on the rear of the camera ball.
- 2) Disassemble the camera. See **Image 1** to **Image 3**. On the IR LED Board, check to see if the connection labeled MIC is installed correctly.



Image 1

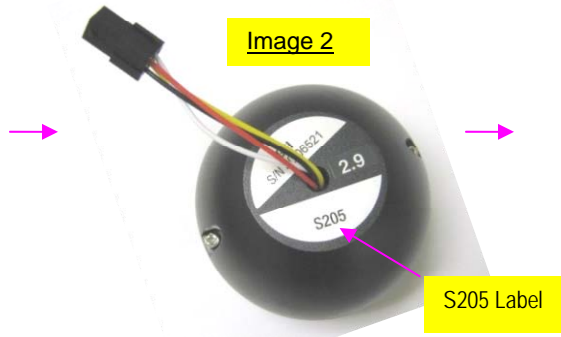


Image 2

S205 Label

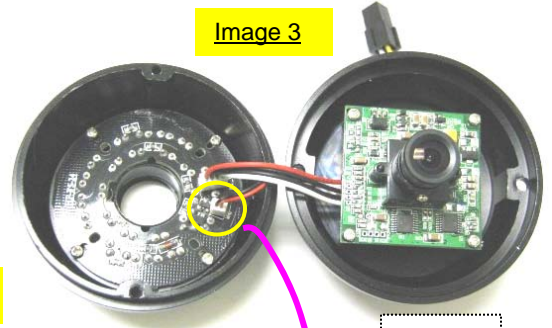


Image 3

Close view

3. **Image 4** shows the MIC connectors CORRECTLY installed. The RED wire is on (+) terminal.

4. **Image 5** shows the MIC connectors INCORRECTLY installed. The BLACK wire is on (+) terminal.

To correct, use a needle nose Pliers and grasp at the base of the connectors (see **Image 6**) to pull up the MIC connectors. Then reinstall MIC connectors as shown in **Image 4**.

Note: **Image 7** shows the 2 connectors off the IR LED Board and apart.

5. Reassemble the camera and test the audio by talking to the Microphone.

If it fails the audio test (no audio heard), contact Gatekeeper Technical Support.

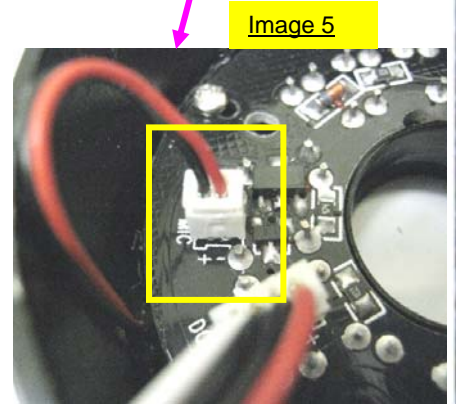


Image 5

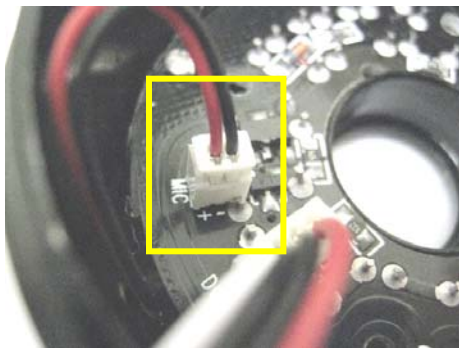


Image 4

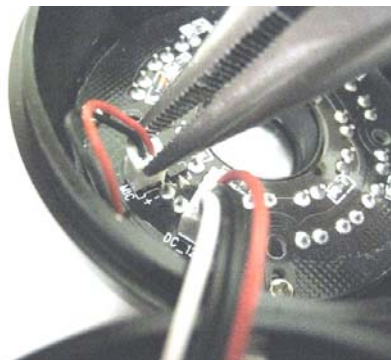


Image 6

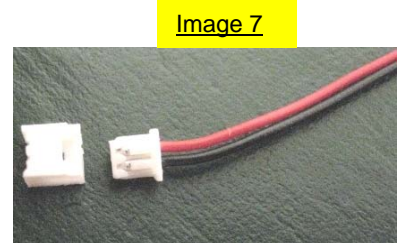


Image 7

Protecting Your Precious Cargo

