



S205 Camera Lens Change Procedure

Attention : The instruction sheet applies to Gatekeeper S205 Cameras only.

Purpose : To change existing camera lens.

Instructions :

1) Not all camera lenses can be used. See below for the selection of the camera lenses and its restriction :

(i) Selection of the Camera Lenses :

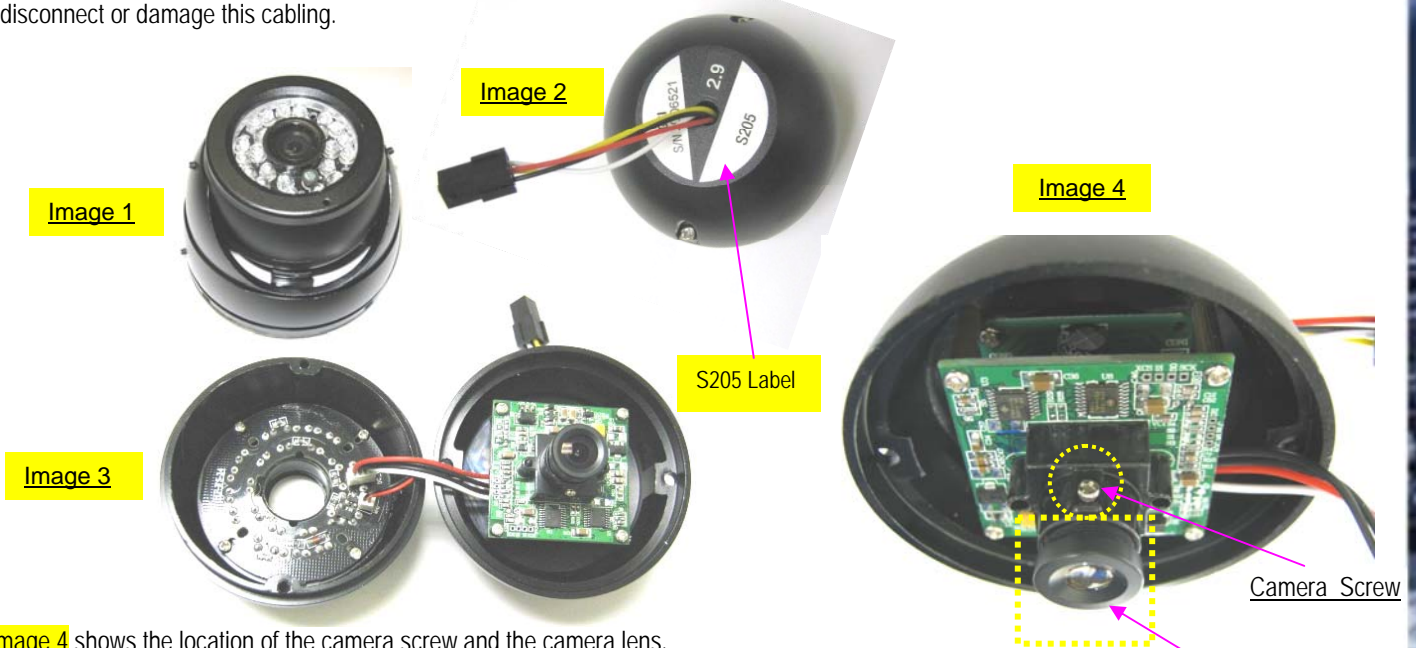
Part number	Lens size
CAMILEGSLB2.9	2.9mm
CAMILEGSLB3.6	3.6mm
CAMILEGSLB4.3	4.3mm
CAMILEGSLB6	6.0mm
CAMILEGSLB8	8.0mm
CAMILEGSLB12	12.0mm

(ii) Restriction on camera selection :

- a) A camera that is originally installed with 2.9mm or 3.6mm lens size can only be replaced by either 2.9mm or 3.6mm camera lens.
- b) A camera that is originally installed with 4.3mm, 6.2mm, 8.2mm or 12.0mm lens size can only be replaced by either one of these camera lenses : 4.3mm, 6.2mm, 8.2mm or 12.0mm.

2) Uninstall the S205 camera from the vehicle. The camera should have a "S205" label affixed on the rear of the camera ball.

3) Disassemble the camera. See **Image 1** to **Image 3**. You will now have two hemispheres joined by a short length of cabling. Be careful not to disconnect or damage this cabling.



4) **Image 4** shows the location of the camera screw and the camera lens.

5) Loosen the camera screw (Do not remove) and remove the camera lens by un-screwing counter-clockwise. Install the replacement Camera Lens to the camera.

6) Power up the camera and check the live video. Fine tune the focus of the Camera Lens and then tighten the camera screw to permanently secure the Camera Lens. **Note:** If the video shows "shadows" at the corners, it indicates installed Camera Lens is not suitable for this particular camera.

7) Follow **Image 3**, **Image 2** and **Image 1** to reassemble the camera. Reinstall assembled camera on the bus.

8) Contact Gatekeeper Technical Support for any enquiry or further assistance.

Protecting Your Precious Cargo

