



Gatekeeper Systems, Inc
#301, 31127 Wheel Ave
Abbotsford, BC, V2T 6H1
Canada

Configuring a Windows PC to Use G4 Web Client

Document Number: DN2757

Revision: 1, Date: August 1st 2013



Configuring a Windows PC to use G4 Web Client.

This guide provides information on how to configure a network connect from a Windows PC to a 304SD DVR. The connection allows for Internet Explorer to access the 304SD DVR via G4 Web Client.

Materials needed:

- A Windows Vista, Windows 7 or Windows 8 PC
- Internet Explorer (with ActiveX enabled)
- One CAT.5e Cable [Depending on the PC used, a cross over CAT.5e Cable may be required]
http://en.wikipedia.org/wiki/Ethernet_crossover_cable
- One 304SD Mobile DVR

The screen shots below are from Windows 7. Windows Vista and Windows 8 have similar functionality. It is recommended that all cache and cookies be cleared from Internet Explorer prior to beginning. To do this go to Internet Options in Internet explorer → General TAB → Browsing History → Delete.

Step One

Connect an Ethernet cable from the PC RJ45 port to the 304SD Network port located on the rear of the 304SD DVR.

(Make sure to turn off/disable your Wi-Fi if using a Wi-Fi enabled PC)

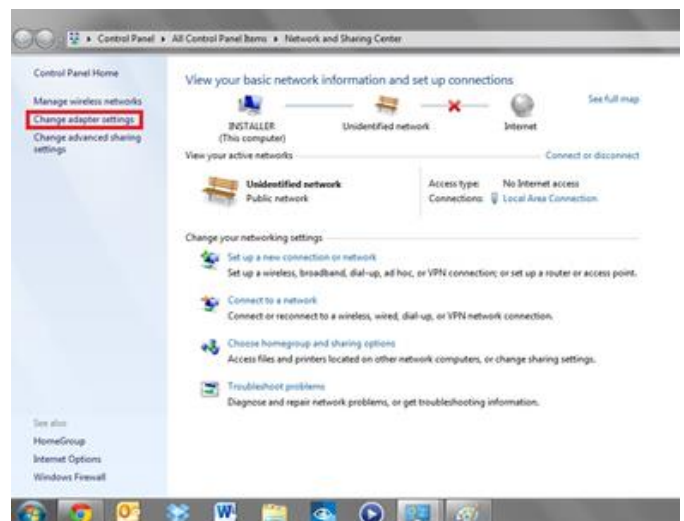
Step Two

On the PC navigate to the right hand side of the task bar (at the bottom of the screen) and click on the Network Icon which should bring up an information box. Click on "Open Network and Sharing Center"



Step Three

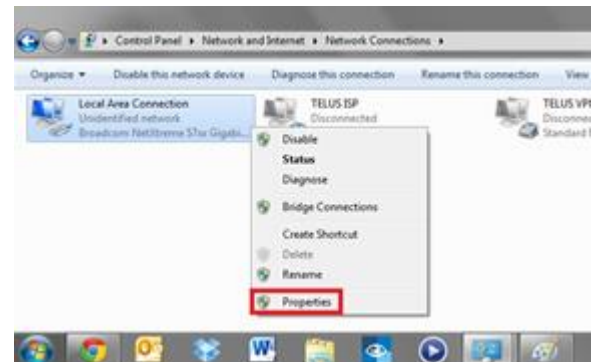
Once the Network and Sharing Center is opened, navigate to the left hand side of the window and click on "Change adapter settings"





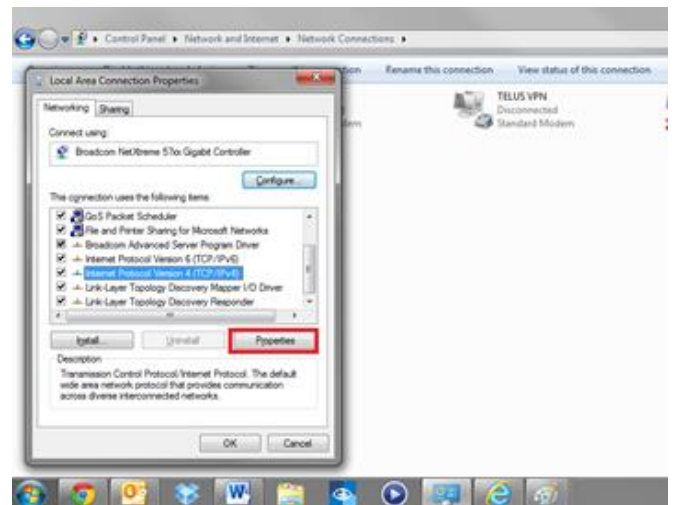
Step Four

The Network Connections window should be visible. Now Single-Right click on "Local Area Connection" then Left click "Properties".



Step Five

Highlight (Single click) "Internet Protocol Version 4 (TCP/IPv4)". Click properties.



Step Six

Select "Alternate Configuration" Tab.

Select "User configured".

Enter the following values:

IP Address: 192.168.088.001

Subnet Mask: 255.255.255.0

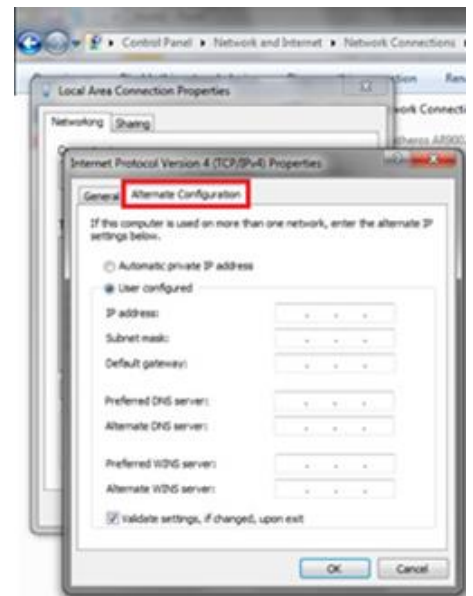
Default Gateway: Leave Blank (As this is a direct device to device connection there is no need for a gateway)

Preferred DNS Server: Leave Blank

Alternate DNS Server: Leave Blank

Preferred WINS server: Leave Blank

Alternate WINS server: Leave Blank





Step Seven

This step changes the settings on the 304SD Mobile DVR
Go into the Wrench and Gear Menu on the 304SD. Enter the username [0] and Password [88888888] and navigate to Network → Local

Step Eight

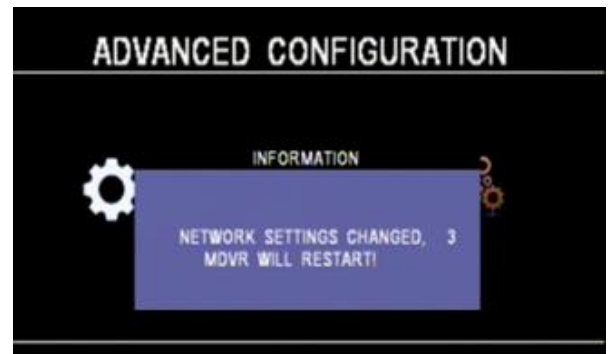
Once in the Local Menu set the values below:

IP: 192.168.088.002
SUB: 255.255.255.000
GATE: Leave at Default
Client Port: Leave at Default
Web Port: Leave at Default
DNS Server: Leave at Default



Once parameters have been set, click OK then Exit out to the Main Screen and the DVR will automatically reboot.

The DVR is now configured





Step Nine

Open Internet Explorer on the connected PC.

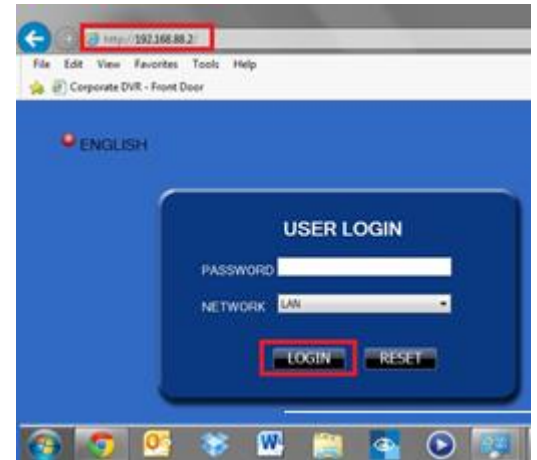
[Internet Explorer must be used in order to have the DVR's web pages function correctly. This is because the browser must support Active X].

In the Address bar type in: <http://192.168.088.002>

This the value previously entered into the DVR in Step 8.

The 304SD DVR will server up the following page:

Click Login to access the Web Client.

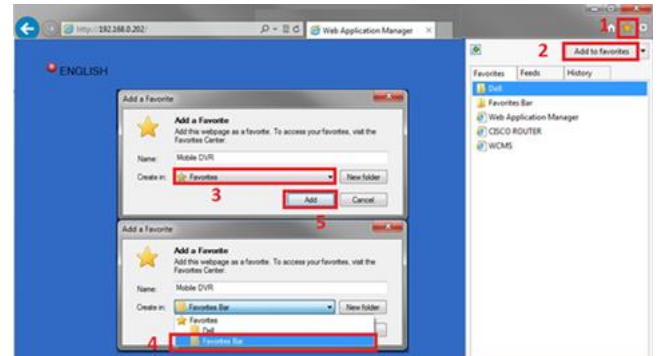


Saving URL as a Bookmark

In order to make it easier for users to access the DVR via the web browser it is recommended that an URL be bookmarked in the address bar.

To bookmark the page, click the Yellow Star in the top right corner of the page,

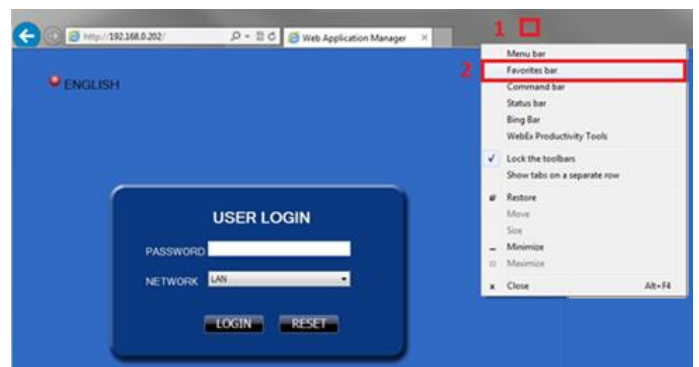
Click "Add to Favorites", in the drop down menu select "Favorites Bar", click "Add".



It is also recommended that the bookmarks that are pre-configured with Internet Explorer be removed from the address bar.

This will reduce the clutter and make it easier to find the bookmark.

To remove a book mark first right click the top of Internet Explorer and select "Favorites Bar".





Then Right click and select "Delete" for any unwanted book marks.

You now have a bookmark for your 304SD.

