

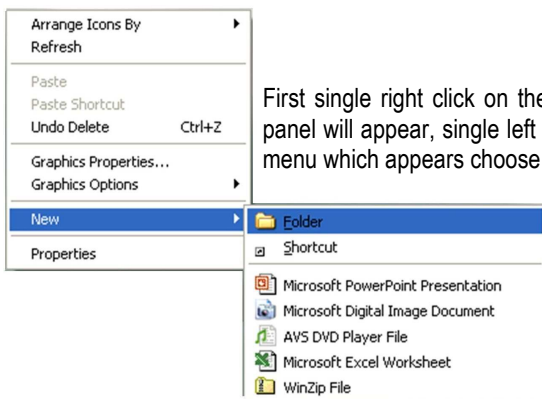


CREATING A FOLDER FOR VIDEO STORAGE

Efficient Organization Of Your Nitro Video Files

Gatekeeper Systems recommends the creation of a dedicated folder for the retention of video files captured using your NiTRO™ Digital Video Recorder. This folder will act as your own personal library where any and all reported incidents can be stored for later review. This document relates to Microsoft Windows XP Operating System only.

The first decision which needs to be made is where on your PC you wish to store you video files. For this example we will use the Windows XP Desktop. The desktop is the first screen you see after your system has fully loaded. This will allow for easier access for File Saving and File Review.



First single right click on the Desktop. A menu option panel will appear, single left click on New and from the menu which appears choose Folder.



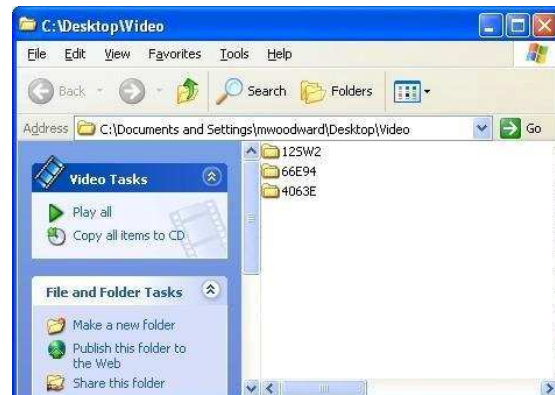
A new folder will appear on the Desktop, with the title highlighted.



Change this title to reflect what YOU will be using it to store; in this example we will use VIDEO.

Also, a point to remember is to remain consistent in the naming of the folders which you will create within your main folder. We suggest that within your VIDEO folder you create individual folders for each bus with the BusID as the folder name. This naming convention will make retrieval of video files a much less painful task in the future.

When you open the video folder on your COMRAD™, you will see that there are several files; .avi; .db and .smi, and they are all needed for effective playback of your captured video. The .avi file is a standard video format and can be played back on any windows system using Windows Media Player*. The .db and .smi (found on NiTRO 1000) are proprietary files from Gatekeeper Systems and these will also need to be copied from the COMRAD™ to the folder you created on the Desktop along with the actual .avi video file. The .db file contains the relevant Sensor information relayed to the NiTRO™ Digital Video Recorder (Brake; Stop-Arm, Alarm, etc.). The .smi file contains information such as BusID, Subtitles, Date and Time, GPS co-ordinates, etc. which are displayed in the NiTRO™ Video Viewer to the right of the playback controls.



* Requires suitable codec to be installed.

Protecting Your Precious Cargo