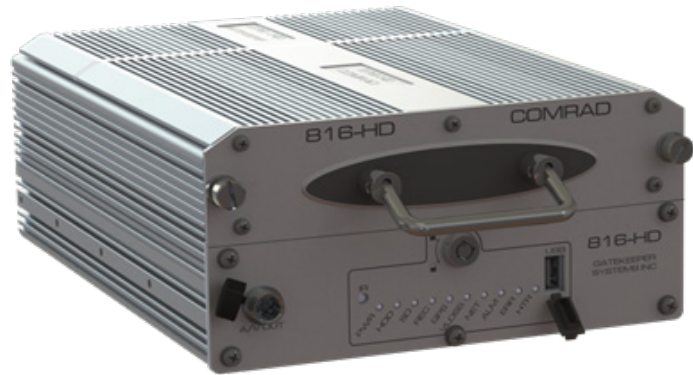


808HD / 816HD

Mobile Digital Video Recorder

- H.264 compression
- Spinning Hard Drive or SSD available
- 8 (808HD) or 16 (816HD) channels
- D1 resolution, 8 Sensors
- Dual Hard Drive Comrad
- Dual Streaming
- Wireless Ready – WiFi and Cellular



The Gatekeeper 808HD/816HD is a 240 frame per second, H.264, eight or sixteen channel, D1 resolution, fan less, hard drive based recorder that will record up to 8 / 16 analog cameras with audio simultaneously. The maximum frame rate for any video channel is 30 FPS and each video channel independently supports selectable video resolutions and 9 quality settings. The Comrad supports dual hard drives for a combined capacity up to 2TB.

Superb Reliability

The 808HD/816HD incorporates many features that dramatically increase the reliability of the DVR and the availability of recorded video. A custom file system is used to record data to the Hard Drive. This file system has been designed so that video can be recovered under most scenarios.

Optionally the 808HD/816HD is available with an external battery that behaves as an uninterruptible power supply (UPS). The battery stores energy so that if the DVR loses power (when the engine is being started or other high current draw electrical devices are turned on, such as air conditioners or lifts) there is enough energy in the battery to continue to supply power to the internal circuits of the DVR for a short period of time. This makes the DVR virtually immune to the notoriously unreliable power found in vehicles.

The 808HD/816HD has a keyed electrical interlock that prevents users from inadvertently removing the Comrad (hard drive carrier) before powering down the DVR.

The key must first be turned to unlock position before the Comrad can be removed. When the key is in the unlocked position the DVR stops recording and it is safe to remove the Comrad. After the Comrad is reinserted, and the key is moved to the locked position the DVR is once again ready to record.

Built Rugged

The Comrad (hard drive carrier) incorporates a shock and vibration system to protect the hard drive. It has passed MIL SPEC 810F (Trucks on Streets) for shock and vibration. In addition, Gatekeeper has developed and subjected the Gatekeeper DVRs to custom shock and vibration profiles. These profiles were obtained by placing sensors on vehicles and recording the shock and vibration that actual DVRs were subjected to in real world conditions.

For the ultimate in hard drive reliability, the Comrad can be equipped with a 256GB Solid State Hard Drive. The Comrad contains an advanced thermal management system that heats up the hard drive to its prescribed operating temperature before spinning it up in cold weather.

Download of Video to a USB Drive

The 808HD/816HD allows the user to download video and/or video of marked events to a USB memory stick that can be inserted in the front of the DVR.

WiFi and Auto Wake Ready

The 808HD/816HD is WiFi Ready. Gatekeepers WiFi system will provide radio coverage in a typical vehicle yard. Utilizing WiFi 802.11n at 5GHz Gatekeeper offers both a rugged industrial rated access point and a WiFi radio for the vehicle. Through the use of Auto Wake, a user can turn on the DVR and WiFi radio in the vehicle so that video can be accessed.

Dual Streaming and Cellular Ready

The 808HD/816HD is dual streaming. This means a high quality full resolution image can be stored on the Comrad while a lower resolution image can be streamed over the optional cellular connection.

Full Complement of Peripherals Available

The following optional peripherals are available:

- GPS
- Driver Alert Button with Status LED's
- Rear cable cover
- Interactive Control Display
- G Sensor

System

Operating System	Embedded real time Linux – boots from internal PROM
Control	IR Remote control, optional control panel, network

Video

Video Channels	8 channels – 808HD 16 channels – 816HD
Output	1 channel RCA connector
Video Compression	H.264
Video Quality	User configurable
Video System	NTSC/PAL 75 ohm termination
Resolution	NTSC: D1 (720 x 480), HD1 (720 x 240), CIF (352 x 240) PAL: D1 (704 x 576) HD1 (704 x 288), CIF (352 x 288)
Frame Rate	Up to 30 FPS per channel
Video Resource Quality	Up to 240 FPS at D1 Resolution and Best Quality
On Screen Display	User configurable – time/date, GPS Info, speed, alarm, acceleration data, temperature, voltage, channel name, vehicle number.
Video Streams	Dual Streaming

Audio

Audio Channels	8 (808HD) / 16 (816HD) – one channel of audio for each video channel. Frame rate must be above 6 fps
Output	1 channel
Audio Compression	ADPCM

Storage

Comrad Storage	Dual Hard Drive Caddy Each Drive Size: 320GB, 500GB, 1TB or 256 SSD
----------------	--

Recording

Recording Trigger	Schedule, alarms, sensor triggers (includes ignition)
Prerecording	15 min
Post recording	Max 30 min
File size	15 min of video

Playback

DVR Video Playback	1 channel local Up to 16 channels using G4 Viewer
Search Method	Date/Time, channel file type
Backup Mode	USB

Network

Ethernet	RJ 45 port (10/100M)
Cellular	HSPA/EVDO (optional)
WiFi	802.11G / 803.11N (optional)
GPS	GPS Location, Speed, Time Sync

Power

Input	8 to 32v
Output	12v at 2 amp, 5V at 2 amp
Consumption accessories	12W recording – with no cameras or accessories
Standby Current	<100 mA @ 12.6V

Physical

Dimensions	6.9" x 6.3" x 2.1" (174 mm x 159 mm x 54 mm)
Weight	3.3 lbs. (1.5 kg)

Environmental

Operating Temp.	-40°F - 150°F (-40°C to +65°C)
Operating RH	Below 90% non-condensing